

Specifications

備注 (Remark)

1. 材料 (Material)

膠芯: PA9T/LCP+30%G.F UL94V-0, 顏色: 黑色

Housing: PA9T/LCP+30%G.F UL94V-0, Color: Black

端子: 黃銅

Contact: Brass

2. 特性 (characteristics):

額定電流: 3.00AMP

Rating Current: 3.00AMP

接觸阻抗: 20mΩ Max

Contact Resistance: 20mΩ Max

絕緣阻抗: 1000MΩ Min

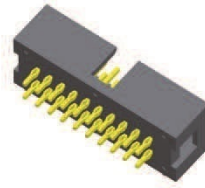
Insulating Resistance: 1000 MΩ Min

耐電壓: AC 500V/分鐘

Withstanding Voltage: AC 500V/Minute

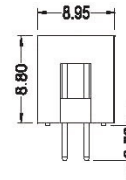
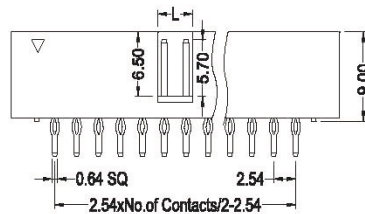
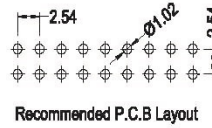
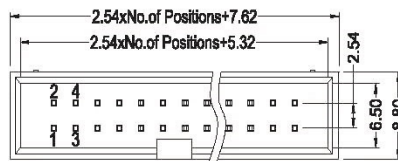
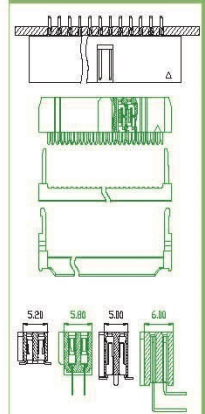
溫度範圍: -40° C to +105° C

Temperature Range: -40° C to +105° C



B254-24XXXXXX1

Mating With/配對母座:



L	
6P~8P	10P~64P
4.00	4.4

B254-24

XX

XX

X

X

1

No.Of Pins
06~64P

Contact Plating

Full Of Gold
G0=0.8u"
~
G9=30u"

S1=Ordinary Tin Plated
S2=Matte Tin Plated
S3=Tin-plated High-temperature

Insulator Colour

B:Black
G:Grey

Packing

A:PE Bag
R:Tape & Reel
T:Tube
D:Tube+CAP
E:Tray